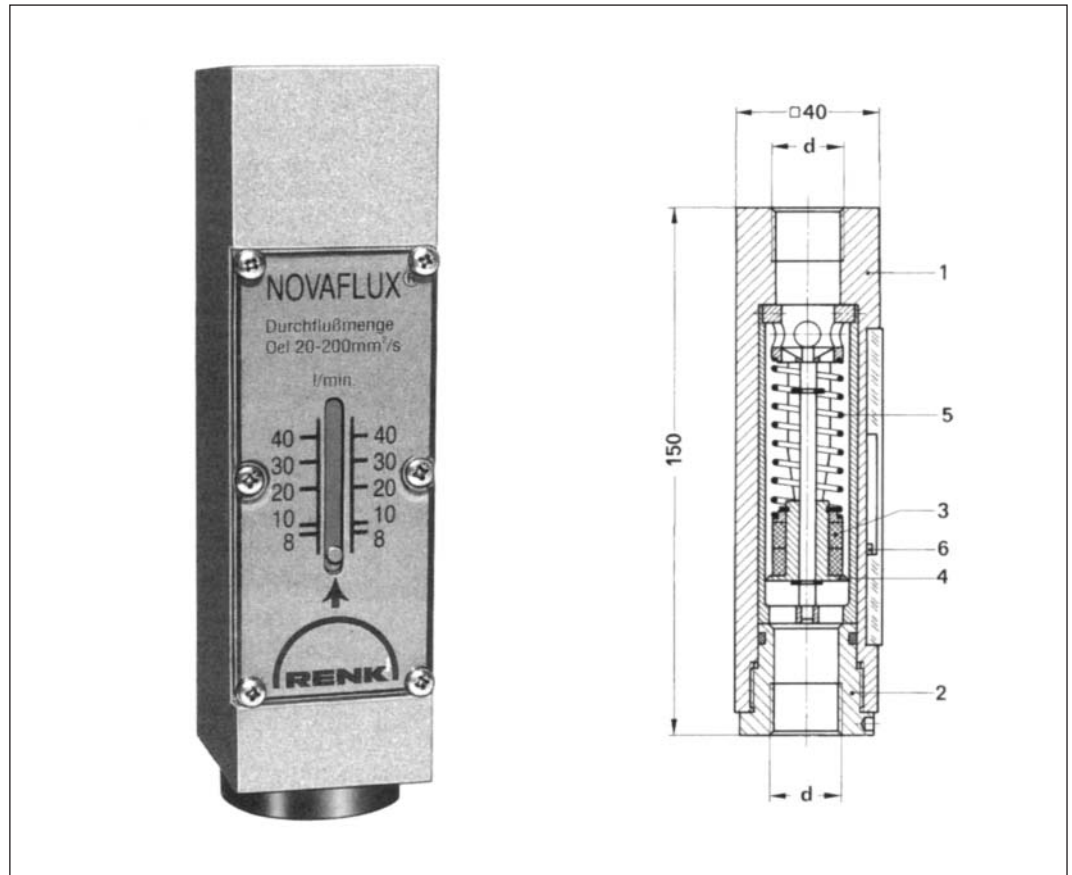


Flow Meter NJV-MI

RENK flow meters, system Honsberg Novaflux type NJV-MI, measure the flow of liquids and can be fitted in optional position. The meters use an external steel ball following the concentrated field of two permanent magnets fitted to the internal piston. The metering ball moves underneath of a scaled plastic plate.

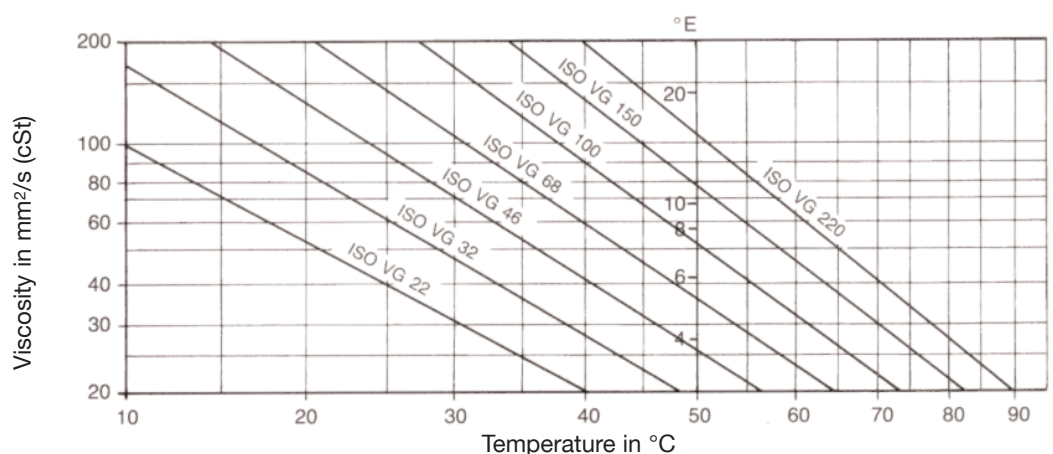
Design and Operation:

The medium enters the square-shaped body (1) through an inlet piece (2). The piston (4) in this body is supported by means of a stainless steel spring (5). Two magnets of opposite field direction (3) are fixed to the piston and move an indicating magnet (6) which is placed under a plastic plate outside the body. This indicator plate permits direct reading of the flow rate. The device is equipped with femal threads (Withworth pipe threads) at both ends for direct insertion in the pipe system. Nominal pressure 100 bar.



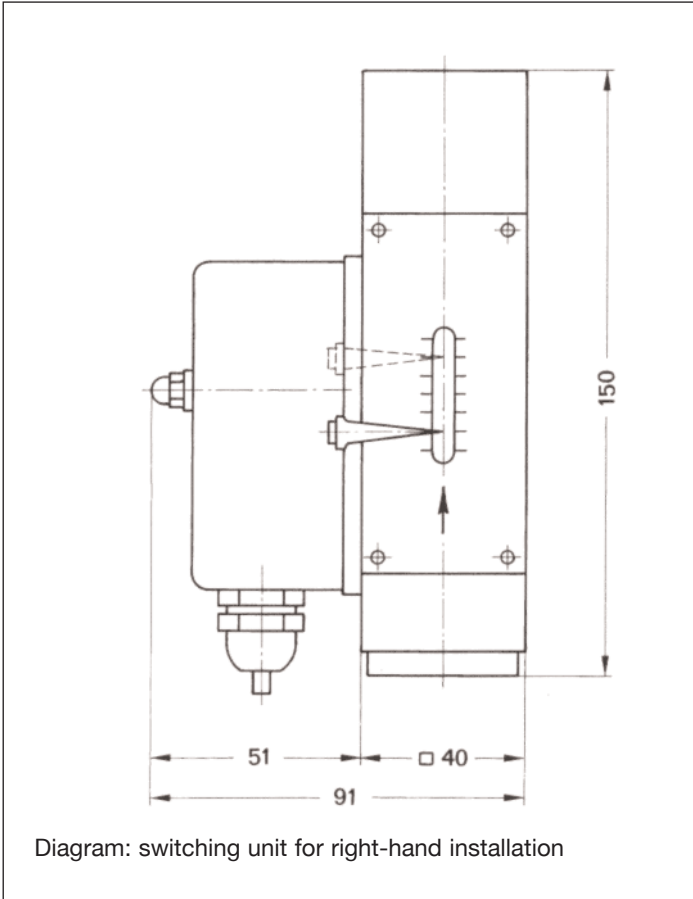
The design of the flow meters is widely viscosity-compensated in the range of 20 to 200 mm²/s due to the geometrically favourable metering disk and the geometrically favourable metering box.

nominal width	Type	[l/min]	joining thread d	Weight [kg]
15	NJV 15-MI Spez.	0,2 - 7	G ½	1,3
15	NJV 15-MI	3 - 10	G ½	1,3
20	NJV 20-MI	8 - 40	G ¾	1,3
25	NJV 25-MI	20 - 60	G 1	1,2



Viscosity-temperature-graph for mineral oils

Switching Unit for Flow Meter



The switching units for RENK flow meters, system Honsberg-Junior, NJE 100 and NJE 200 serve to actuate a contact outside the body in case the flow rate is lower than that pre-selected within the measuring range of the unit.

The switching unit NJE 100 operates as "make" contact (connections 1 and 2) or "break" contact (connections 2 and 3) when reaching the pre-set oil flow.

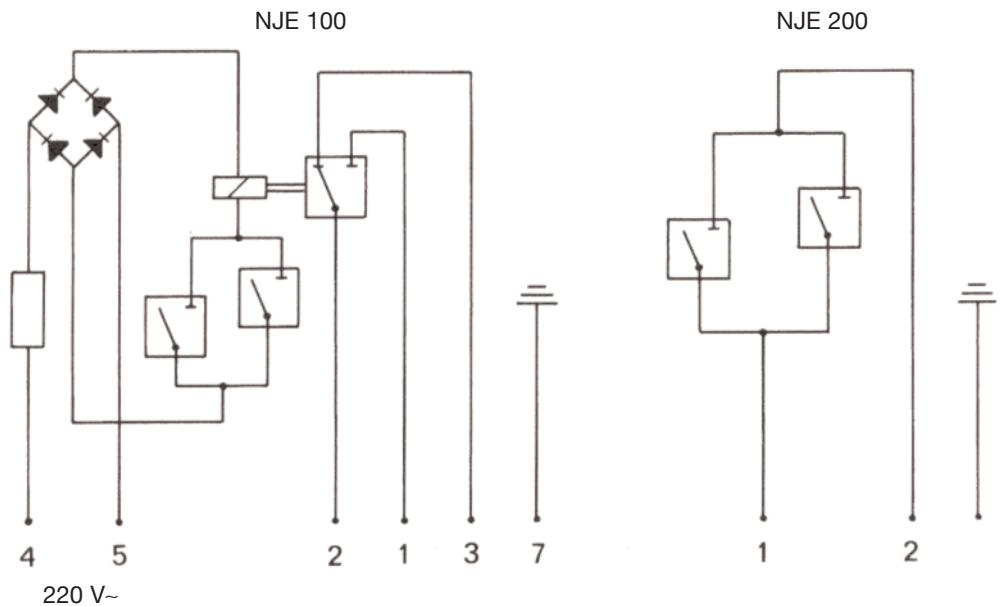
The switching unit NJE 200 operates as "make" contact only, when reaching the preset oil flow.

The total separation of the metering element from the switching unit allows at any time to alter flow meters into flow controllers by subsequent installation of a switching unit.

As a maximum two switching units may be mounted to one flow controller. When placing an order please indicate, if switching units for left-handed or right-handed installation are required.

Identification	Type	FB-No	volts/va	type of wire
Switch unit	NJE 100	440-0009	220 ~ / 1250	6 x 0,5
Switch unit	NJE 200	440-0008	220 ~ / 30	3 x 0,5

wiring diagram



RENK
 RENK AKTIENGESELLSCHAFT
 Werk Hannover
 Weltausstellungsallee 21
 D-30539 Hannover
 Telephone: + 49 (5 11) 86 01-0
 Telefax: + 49 (5 11) 86 01-288
 e-mail: gleitlager.hannover@renk-ag.com
 Internet: www.renk.de

Flow Regulating Valve for fine flow control of fluids

The regulating valves used by RENK are employed for fine flow control of fluids. They will permit precise adjustment of oil flow rates as required for the lubrication of bearings (external oil circulation or hydrostatic jacking), particularly in combination with a RENK flow meter.

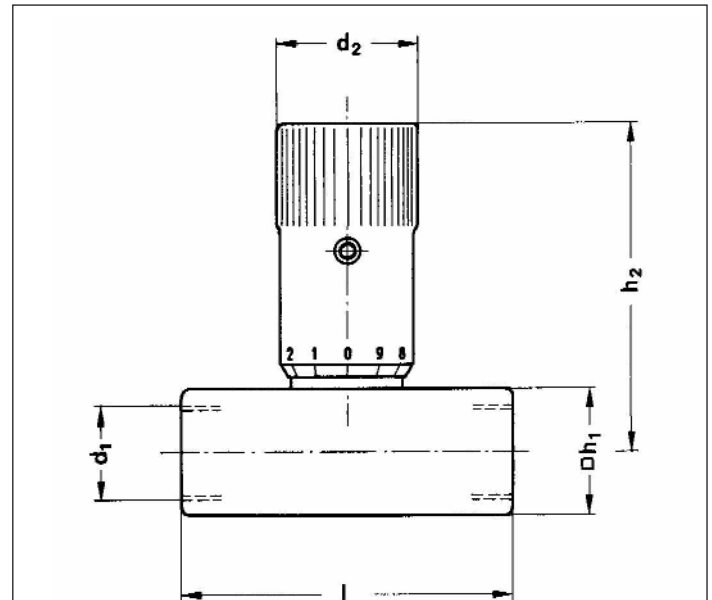
Six coloured rings and a vernier scale permit optimal control, easy read-out and excellent reproducibility.

Design and Operation

The square valve body is made of steel with internal threads (pipe threads DIN ISO 228) at either end for inline operation.

Adjustment is via a two-stage needle which permits very accurate setting of low rates for the first 3 turns. After further 3 turns the valve is fully open. The regulating cylinder or hexagon can be set in any position by means of a locking screw with hexagon socket. The valve can operate in optional position.

It should be noted that the oil throughput depends upon viscosity and pressure (see Fig. 1 and Fig. 2).



With size G 1 the knurled knob is replaced by a hexagonal adjusting knob SW 48

Dimensions in mm

d_1	d_2	h_1	h_2	l	max. operating pressure	max. throughput
G 1/2	30	32	68	67	350 bar	11 l/min
G 3/4	35	38	83	83	210 bar	25 l/min
G 1	-	45	121	108	210 bar	55 l/min

Diagrams

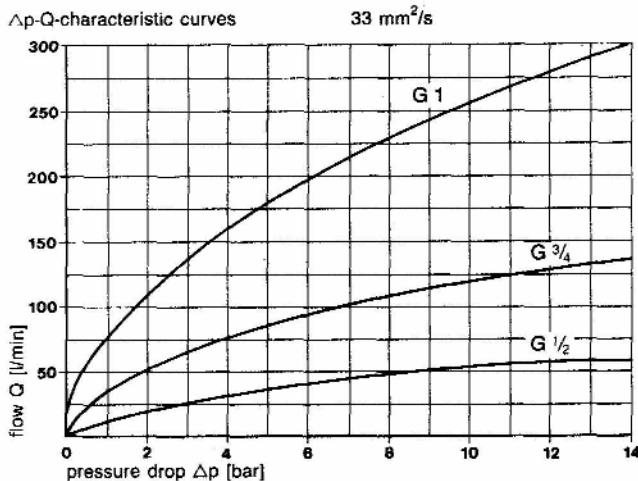


Fig. 1

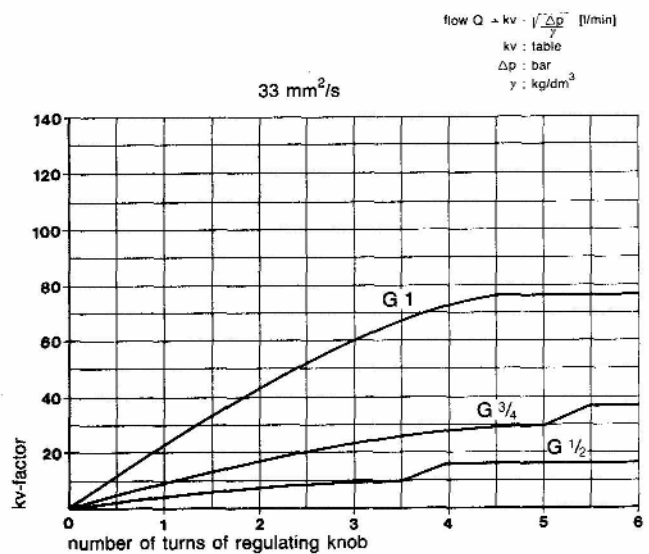


Fig. 2

Sales Organisation



Domestic

Weltausstellungsallee 21
D-30539 Hannover
Telephone: (5 11) 86 01-203
Telefax: (5 11) 86 01-288

Export

Weltausstellungsallee 21
D-30539 Hannover
Telephone: (5 11) 86 01-265
Telefax: (5 11) 86 01-288

Sales Agencies

Australia	G.B. and Ireland	Norway
Austria	Hungary	PR China
Belgium	India	Slovak Republic
Brazil	Italy	Slovenia Republic
Canada	Japan	South Africa
Czech Republic	Liechtenstein	South Korea
Croatia	Luxembourg	Spain
Finland	Mexico	Switzerland
France	Netherlands	USA

Headquarters and Manufacturing Plant



RENK AKTIENGESELLSCHAFT
Werk Hannover
Weltausstellungsallee 21
D-30539 Hannover
Telephone: + 49 (5 11) 86 01-0
Telefax: + 49 (5 11) 86 01-288
e-mail: gleitlager.hannover@renk-ag.com
Internet: www.renk.de

Assembly and Distribution Centers with Sales and Engineering Support



RENK Corporation
304, Tucapau Road
29334 Duncan S.C.
USA
Telephone: (1-8 64) 4 33 00 69
Telefax: (1-8 64) 4 33 06 36



MAN B&W (Japan) Ltd.
RH Division;
Fuji Building (Room 121)
3-2-3 Marunouchi
Chiyoda-ku, Tokyo 100-0005
Japan
Telephone: (81-3) 3215 1310
Telefax: (81-3) 3284 0867

We reserve the right to changes made in the interests of technical improvement.